

Secure Your Parking Lots & Auto Dealerships

BY PARKING LOT SECURITY EXPERTS, LOTGUARD

Managing a commercial parking lot or auto dealership presents a range of security challenges as they are a natural attraction for criminal activities such as vehicle theft, vandalism, and property damage.

FACTS AND FIGURES



Parking lot crimes cost **\$6b** per year in property loss associated with those crimes.

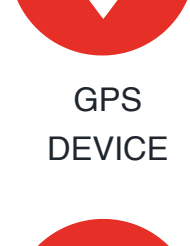


10% of all property crimes take place in a parking Lot according to the Bureau of Justice Statistics.

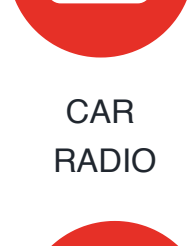


It is estimated that over **2million** parking lot crimes occur each year.

WHAT ARE THE MOST STOLEN ITEMS ON FROM VEHICLES AT PARKING LOTS?



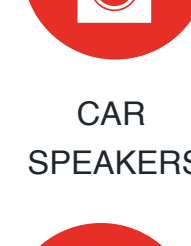
GPS DEVICE



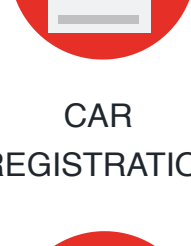
CAR RADIO



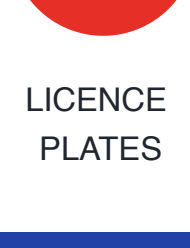
ELECTRONIC DEVICES



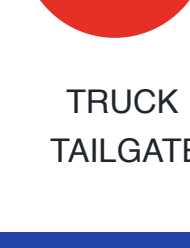
CAR SPEAKERS



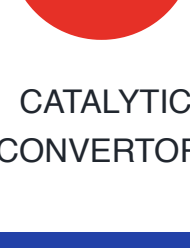
CAR REGISTRATION



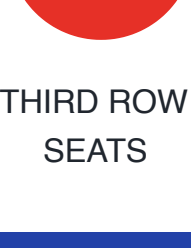
LICENCE PLATES



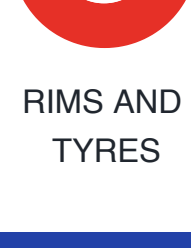
TRUCK TAILGATE



CATALYTIC CONVERTORS

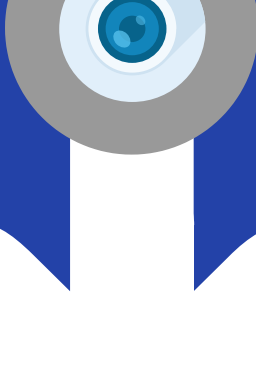


THIRD ROW SEATS



RIMS AND TYRES

EFFECTIVE WAYS TO SECURE YOUR PARKING LOTS & AUTO DEALERSHIPS



1 SITE SURVEY

Understanding the nature of your site is critical to developing a security plan. Your site survey should focus on the physical layout of your site, as this will determine the number of security cameras you will need, and where they should be installed.

2 SECURITY RISK ASSESSMENT

Once your site survey is completed, the next phase of controlling your security risks is to identify areas of vulnerability at your parking lots or dealerships.



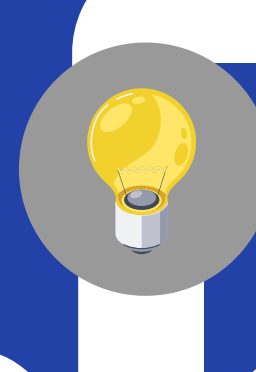
3 SURVEILLANCE SYSTEMS

Surveillance cameras are undoubtedly the most effective way of protecting parking lots from crimes such as theft, trespass, arson and vandalism.

They help prevent, catch and record any criminal activity, and mitigate any liability due to losses or accidents and injuries on-site.

4 SECURE FENCING

Surrounding your lotd with secure fencing, gates or hoarding will prevent easy access and will create a physical barrier to keep trespassers from accessing your lots.



5 LIGHTING FACILITIES

Criminals operate better under the cover of darkness, so investing in lighting facilities for your parking lots is a simple and cost-effective way of creating a natural deterrent. Also, consider backup power in case of an outage.

6 CONTROL ACCESS TO YOUR LOTS

Controlling who accesses your lots will ensure only authorized people can enter and that a full audit trail of visitors is logged.

A manned or automated security gate using a swipe card or ticketing system will help you track who comes and goes, and prevent unauthorized access.



7 REMOVE KEYS

Remove keys from vehicles where left unattended and invest in vehicle immobilizing equipment to prevent theft.

8 INSTALL EMERGENCY PHONES AND STATIONS

In an emergency situation, or if one of your customers is in immediate danger, a dedicated emergency phone or station can get the immediate assistance they require.

Emergency phones can help your staff or customers get connected to an emergency operator when they need it most.



9 INCLUDE PEOPLE AND PROCESSES

Security begins with your employees. Ensure they are fully trained to follow your security protocols, that they understand how to spot security risks, and that you can trust them with your assets.

BASIC KEY MEASURES WCCTV WOULD RECOMMEND

LOCKING ALL VEHICLES OVERNIGHT



LOCKING AWAY KEYS FOR ANY VEHICLES



INSTALLING ANTI-THEFT DEVICES



REGULAR INVENTORY CHECKS AND LOG ALL GOODS

CONTACT WCCTV TODAY

877 805-9475
www.lot-guard.com

To Protect Your Parking Lot and Auto Dealerships

