

A COMPLETE GUIDE TO SECURING YOUR PARKING LOTS & DEALERSHIPS



THE IMPORTANCE OF PARKING LOT AND AUTO DEALERSHIP SECURITY



Managing a commercial parking lot or auto dealership presents a range of security challenges as they are a natural attraction for criminal activities such as vehicle theft, vandalism, and property damage.

This problem is so widespread that per the Bureau of Justice Statistics, over 10% of all property crimes take place in a parking lot.

That's over 2 million parking lot crimes each year, with over \$6B in property loss associated with those crimes.

Crime rates typically spike around the holiday periods, and with rising metal resale prices theft of catalytic convertors has increased dramatically in recent months.

A proactive crime prevention plan is critical for successfully deterring trespassers from your properties. To do this, businesses need to have a customized security plan in place, and have a full understanding of the risks they face.

As the USA's leading supplier of parking lot surveillance solutions, we've outlined the critical steps that property owners and businesses should take to prevent crimes in your lot or dealership.

STEP ONE

SITE SURVEY



Understanding the nature of your site is critical to developing a security plan. Your site survey should focus on the physical layout of your site, as this will determine the number of security cameras you will need, and where they should be installed.

As a managed security service provider, we can provide a free site survey as part of our overall survey, however below are some key questions you would need to consider if you wanted to do it yourself.

1. What is the total area in square feet that needs to be protected?

.....

.....

2. What is the field of view that you need to record?

.....

.....

3. How many cameras do you think you will need?

.....

.....



STEP ONE

SITE SURVEY



4. Which areas do the cameras need to cover?

Area #1:

Area #2:

Area #3:

Area #4:

Additional Locations:

5. Will you need any additional equipment to get the cameras up and running? (e.g. power supply, LTE connectivity, thermal cameras, LPR)

.....

.....



STEP TWO

SECURITY RISK ASSESSMENT



Once your site survey is completed, the next phase of controlling your security risks is to identify areas of vulnerability at your parking lots or dealerships.

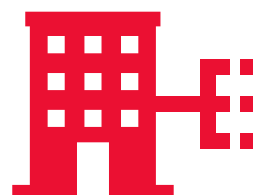
When performing a risk assessment, you should:

1. Identify the vulnerability
2. Assess the likelihood of a security breach occurring
3. Assess the severity of loss or damage a security breach could cause

Your risk assessment should focus on two distinct areas:



RISK



CONTROL

STEP TWO

SECURITY RISK ASSESSMENT



EXAMPLE RISKS

When identifying the risks at your parking lots or dealerships, you may find it useful to get started with using some of the examples threats we have listed below:

☐ Your business has experienced security breaches previously.

☐ Your lot is in a remote location.

☐ Your site lacks adequate perimeter fencing.

☐ Your site has no security cameras or guarding services.

☐ Your site includes blind spots.

Other:
.....
.....

☐ Your site does not have proper lighting.

STEP TWO

SECURITY RISK ASSESSMENT



Next, you should determine what specific crimes you are likely to face at your parking lot or dealership. Example crimes include:

- Theft
- Vandalism
- Trespass
- Arson
- Threats to guest / customer / employee safety
- Other:
-
-

Understanding which of these crimes is your biggest risk will help determine the type of surveillance solution you need (monitored cameras, LPR reader, video analytics, night vision/thermal cameras, voice-down audio).

LEGALITY

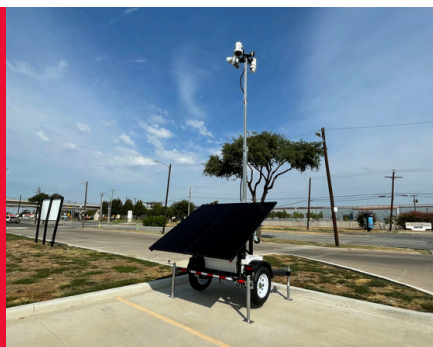
Different states have different legislation governing the use of surveillance cameras, so it is important your remain ahead of any legal requirement or limitations determined by either your location or application. It is also important to ensure you are using US-approved surveillance cameras (for example, many if not all Chinese manufactured surveillance cameras are banned across the US).

STEP THREE

CHOOSE YOUR TECHNOLOGY



- 1 Utilize mobile surveillance cameras
- 2 Ensure cameras cover all required areas
- 3 Explore add-ons (i.e. LPR, thermal, etc)



Following your audit and risk assessment, you should have a thorough understanding of the challenges you face, and your next important step is choosing the most appropriate mitigations for these threats. These mitigations are likely to include utilizing surveillance cameras.

NEXT STEP

Next on the list is identifying the resources required to help you achieve your security goals – and this includes selecting your video surveillance technology.

➤ [LEARN MORE](#) ◀

CHOOSING THE RIGHT SURVEILLANCE SYSTEM FOR YOUR PARKING LOT



Surveillance cameras are undoubtedly the most effective way of protecting parking lots from crimes such as theft, trespass, arson and vandalism.

They help prevent, catch and record any criminal activity, and mitigate any liability due to losses or accidents and injuries on-site.

But every site has its own set of unique security challenges, so what should buyers be looking for when selecting the best security camera?

THE LOTGUARD PRO SURVEILLANCE TRAILER

- All-in-one rapid deployment mobile surveillance trailer
- 24/7/365 autonomy
- Compact and easy to transport
- Quick and easy to install - 20 minute / 1 person
- Integrated 4G/5G LTE connectivity
- Remote access to cameras at any time via any device
- Integrated 4TB SSD internal storage
- Up to 87% cheaper than using security guards
- 20-foot-tower - rotates 360 degrees



CHOOSING THE RIGHT SURVEILLANCE SYSTEM FOR YOUR PARKING LOT



CUSTOMIZABLE FEATURE SETS

Every site has its own unique set of security challenges, so we have designed security cameras that can be fully customizable to suit any application.

As well as boasting all the features listed above, we can also bolt-on:

➤ LPR Cameras ➤ Blue Light Alarms ➤ Audio Voice-Down Alarm

BENEFITS OF ADDITIONAL FEATURES

Many IP surveillance systems can be customized with additional features that you can leverage to maximize security.

When evaluating different cameras, see if they include features such as:

ANALYTIC CAPABILITIES

helping you derive value from video data to improve processes and customer relationships.

MOBILE CAPABILITIES

that allow you to monitor live or recorded camera footage from your phone.

AUTOMATED DETERRENTS

such as sirens, pre-recorded verbal warnings and flashing lights.

CAMERA MONITORING

functionality that checks camera health frequently and automatically flags any discovered issues.

STEP FOUR

INCLUDE PEOPLE & PROCESSES



Security begins with your employees. Ensure they are fully trained to follow your security protocols, that they understand how to spot security risks, and that you can trust them with your assets.

If you don't already have a security protocol in place, LotGuard can work with you to implement best practices to work alongside our **security camera systems**.

Basic key measures we would recommend include:

- Marking or die-stamping any tools or valuable equipment on-site
- Running regular inventory checks, and keep a log of all goods in and out
- Locking all vehicles overnight
- Installing anti-theft devices in all vehicles
- Use locking gas and oil caps
- Only keeping a minimal amount of gas in any vehicles
- Locking away keys for any vehicles on-site

Once you have a security procedure in place, make sure it is effectively communicated across your team, and that it is adjusted to cover staff vacation time and public holidays. Finally, ensure you are running background checks on your team so you know who you have onsite.

WHY CHOOSE LOTGUARD FOR YOUR SECURITY SOLUTIONS?



The **LotGuard Solar Surveillance Trailers** have been specifically designed to detect, deter, and defend against criminal activity across a range of properties, parking facilities, and external environments.

Using LotGuard to secure your premises removes the requirement for mounting poles, onsite power, and internet connectivity.

We can customize LotGuard units with unique camera profiles, including IR PTZ, Thermal, License Plate Recognition (LPR), and multi-sensor cameras.

These cameras deliver live and recorded footage via 4G LTE technology allowing you to view live and archived video remotely regardless of your location or send alarms to our remote monitoring partners.

